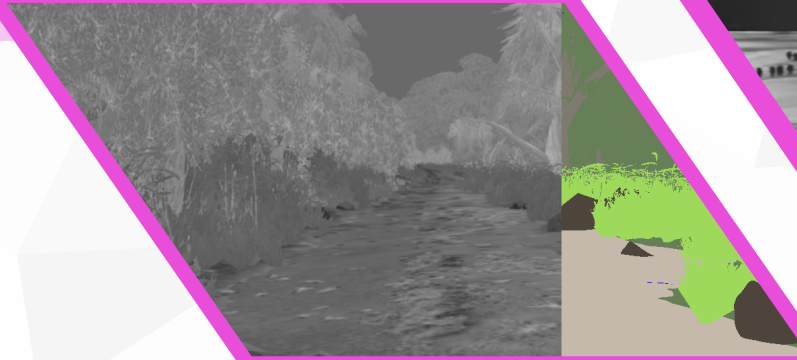
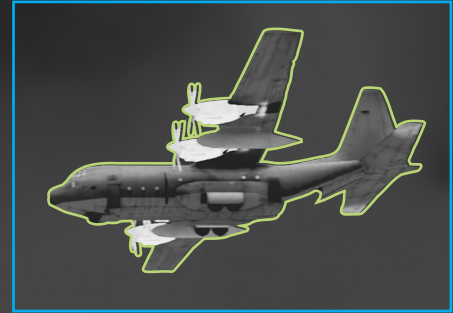


Burke Class Destroyer



C-130



Majestic.ai

A generative AI companion
for visual outdoor synthetic data



MAJESTIC.ai

Majestic.ai generates synthetic data across all sensor types and spectrum ranges, from visible light to thermal IR, LiDAR, and SAR, using precise physics-based models for AI/ML engine training and validation.

By delivering annotated visual datasets in realistic, controlled outdoor environments, **Majestic.ai** significantly accelerates research and development, reduces training and validation costs, and shortens delivery times substantially.

Majestic.ai Features and Capabilities



Full Spectral Simulation

- VIS / NIR / NVG / SWIR / MWIR / LWIR
- Multi/Hyper spectral
- LiDAR
- SAR



Environment

- Land, maritime, air and space environments



Automatic Annotation and Metadata

- Boundary boxes and objects contours
- Classification and segmentation
- Statistics and per image metadata
- Standard formats (COCO, YOLO, etc.)



Widely Diverse & Balanced Datasets

- Randomizing parameters
- Control over scenario parameters
- Dynamic thermal behavior
- Complex scenes, multiple models, dynamic behavior



Datasets as a Service (DaaS)

- Delivery of Video and Images
- Fast delivery accelerating Go-To-Market
- Enables data scientists, researchers and developers to focus on AI engines development



Datasets Verification

- Based on TOPS, Tiltan's proven operational physics-based 3D engine
- Automatic and manual datasets quality assurance



Reduce Costs

- Minimizes real data acquisition
- Optimize human resources
- Fast delivery
- Privacy & security



AI Engine Validation

- Annotated video & images for AI validation
- Replacing real videos & images when scarce, costly, or time-sensitive
- Progression, boundary, negative and load testing

About Tiltan

Tiltan Software Engineering Ltd. is a leading solution provider specializing in Simulation, 3D Engines, Generative AI Training, Geo-Systems, 3D Content, and Operation Center Systems and Tools.

With over 30 years of experience, Tiltan's simulation products provide a one-stop-shop solution for training, development, and hardware-in-the-loop systems, powered by a proprietary 3D engine and Generative AI.

Our Geo-System products support space, aerial, manned, and unmanned vehicles, addressing registration, localization, and navigation challenges, as well as geo-mapping systems.

Tiltan's in-house content production delivers high-fidelity, geo-specific visual databases, 3D models, and mapping data for VIS, IR, LIDAR, and SAR applications.

Tiltan is driven by a commitment to customer success, excellence, and innovation, ensuring our solutions meet the highest standards of performance and reliability.

